



工业用暗装斜座 Hide Inclined Socket



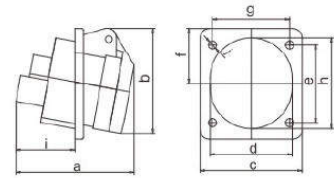
LK-413-4 LK-423-4

earth contact position	4h	
rated current(A)	16	32
	pole 3	
dimension(mm)	a b c d e f g h i j	73 70 62 50 49 33 47 56 36 5
		87 91 80 64 71 42 61 76 44 6
cable nominal cross-section area(mm <sup>2</sup> )	1-2.5	2.5-6

电 流 Current(A): 16A. 32A

电 压 Voltage(V): 110-130V~2P+E

防护等级 Protection degree: IP44



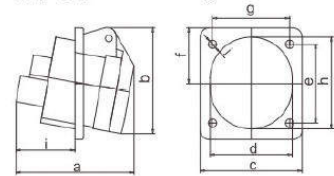
LK-413 LK-423

earth contact position	6h	
rated current(A)	16	32
	pole 3	
dimension(mm)	a b c d e f g h i j	73 70 62 50 49 33 47 56 36 5
		87 91 80 64 71 42 61 76 44 6
cable nominal cross-section area(mm <sup>2</sup> )	1-2.5	2.5-6

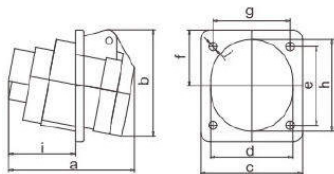
电 流 Current(A): 16A. 32A

电 压 Voltage(V): 220-240V~2P+E

防护等级 Protection degree: IP44



电 流 Current(A): 16A. 32A  
电 压 Voltage(V): 380-415V~3P+E  
防护等级 Protection degree: IP44

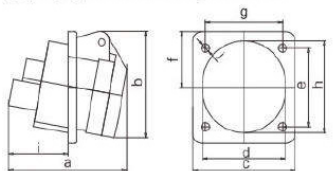


earth contact position	6h	
rated current(A)	16	32
	pole 4	
dimension(mm)	a b c d e f g h i j	80 78 76 56 62 42 60 64 44 5
		87 91 80 64 71 42 61 76 44 6
cable nominal cross-section area(mm <sup>2</sup> )	1-2.5	2.5-6



LK-414 LK-424

电 流 Current(A): 16A. 32A  
电 压 Voltage(V): 220-380V~240-415V~3P+N+E  
防护等级 Protection degree: IP44



earth contact position	6h	
rated current(A)	16	32
	pole 5	
dimension(mm)	a b c d e f g h i j	79 86 75 62 62 37 60 70 42 5
		87 84 82 72 71 43 61 82 44 5
cable nominal cross-section area(mm <sup>2</sup> )	1-2.5	2.5-6



LK-415 LK-425